



GAT MONTHLY MEMBERSHIP PROGRESS REPORT

Results as of: 3/31/2023

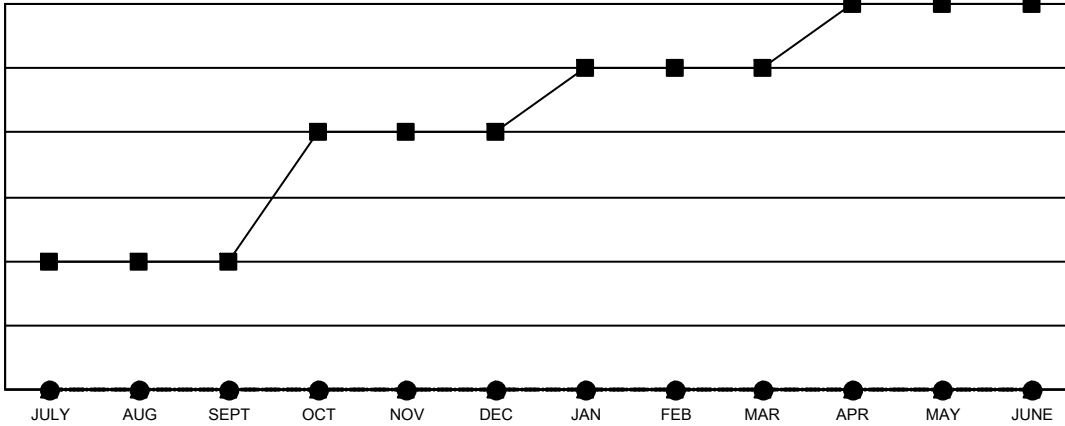
Multiple District 3

LOCATION: OKLAHOMA

Clubs			
RESULTS FOR 2022-2023			
QUARTER	NEW CLUB GOAL	NEW CLUBS	DROPPED CLUBS
JULY/AUG/SEPT	2	0	1
OCT/NOV/DEC	2	0	1
JAN/FEB/MAR	1	0	0
APR/MAY/JUNE	1	0	0

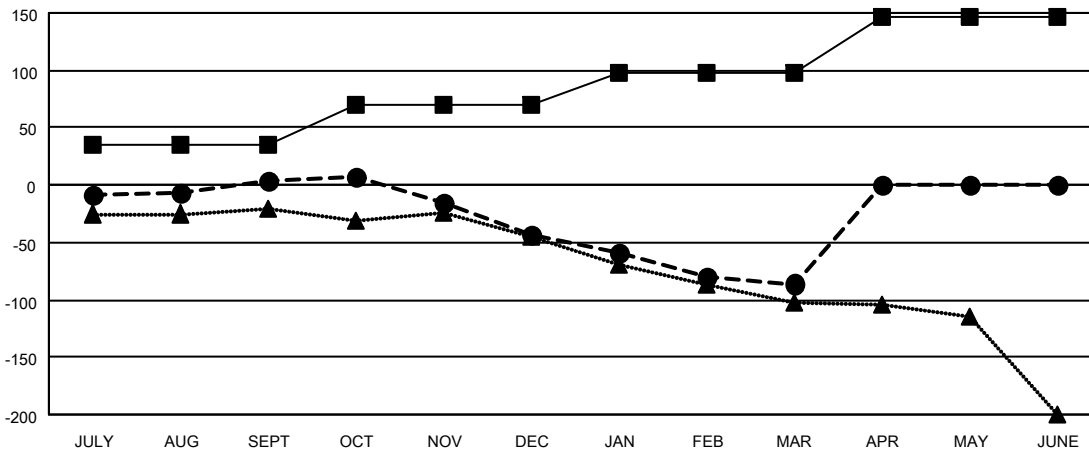
Members			
RESULTS FOR 2022-2023			
QUARTER	MEMBER GROWTH NET GOAL	MEMBER GROWTH ACTUAL	DROPPED MEMBERS ACTUAL (including transfers)
JULY/AUG/SEPT	35	100	88
OCT/NOV/DEC	35	63	104
JAN/FEB/MAR	28	57	80
APR/MAY/JUNE	48	0	0

GOALS AND ACTUAL NEW CLUBS CUMULATIVE



- CURRENT YEAR GOALS FOR NEW CLUBS
- CURRENT YEAR ACTUAL NEW CLUBS
- ▲- LAST YEAR ACTUAL NEW CLUBS

GOALS AND ACTUAL MEMBERS CUMULATIVE



- MEMBER GROWTH NET GOAL
- MEMBER GROWTH ACTUAL
- ▲- LAST YEAR MEMBERSHIP ACTUAL

DROPPED CLUBS: 2	57 CLUBS OF 138 ADDED 1 OR MORE NEW MEMBERS	GENDER DISTRIBUTION
DROPPED MEMBERS	CLICK HERE FOR CUMULATIVE MEMBERSHIP DATA	MALE 1,986 (65.96%)
DECEASED 24		FEMALE 1,024 (34.01%)
CLUB CANCELLED 16		NON BINARY 0 (0.00%)
OTHER 232		PREFER NOT TO ANSWER 1 (0.03%)
TOTAL 272		TOTAL FAMILY UNIT MEMBERS 438
		FAMILY MEMBERS PAYING HALF DUES 221